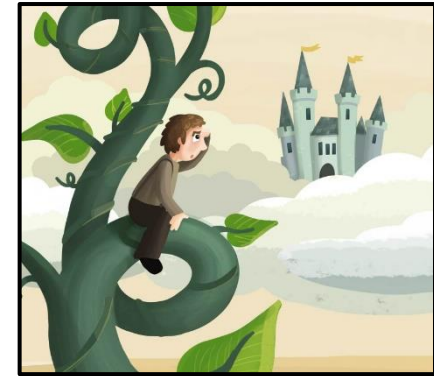


Planning Theme: At the top of the beanstalk (Summer 1 2021).

### At the top of the beanstalk

1. What does Jack find at the top of the beanstalk? Can you describe the characters in the story? Can you think about the story from the viewpoints of the different characters?  
**(English, Communication and Language, Literacy, PSHE)**
2. What does a plant need to grow? What are the different parts of a plant called? What is their function?  
**(Science, Understanding the World)**



**Hook: Jack and the Beanstalk is a traditional tale. There are lots of different versions of traditional tales. If you were writing the story what would Jack find at the top of the beanstalk?**

### Areas of Learning.

#### English (including Communication and Language and Literacy).

Our class book we will be the traditional tale "Jack and the Beanstalk" and exploring different versions of this story, including looking at the story from the Giant's point of view.

We will be using this text to write

character and setting descriptions using new vocabulary

- a set of instructions on how to plant a beanstalk
- letters between Jack and the Giant
- our own version of the story
- Using our voice and drama to retell parts of the story

**Year 1.**

Year 1 will be continuing their work on Phase 5 phonics looking at alternative spellings for known phonemes and how these are linked in extended sound families. They will continue to practise applying this knowledge when reading and writing. They will also be learning how to add the prefix un and the spelling rule for adding -s or -es as the plural marker for nouns and the third person singular marker for verbs when writing. Weekly spellings will be based upon the letter patterns the children are looking at in phonics each week. They will also be learning to apply punctuation rules in their writing including capital letters at the start of sentences and for the names of people and places, full stops, explanation marks and question marks.

Year 1 will continue to read individually with adults in school on a regular basis and are encouraged to practise their reading regularly at home. In addition Year 1 will have weekly guided reading sessions where they explore a text as a group and answer questions based on the reading roles as well as completing independent reading comprehension activities.

**Reception.**

Reception will continue to work on phase 2 and 3 phonics and applying this knowledge when reading and writing. They will also be continuing to learn and apply their knowledge of "tricky" (non-phonetic) high frequency words. Reception will also continue to practise constructing and writing words and sentences, moving towards being able to do this skill independently.

Reception will continue to read individually with adults in school on a regularly basis and are encouraged to practise their reading regularly at home.

**Mathematics.****Year 1.**

Year 1 will be using their knowledge of number bonds to support their work on addition and subtraction by using the "target 10" method. They will also be practising mental subtraction strategies by counting back.

Year 1 will be consolidating their knowledge of numbers to 100, using place value. They will be able to accurately identify the tens and ones in a given number and use this knowledge to order numbers and identify one more/one less and ten more/ten less than a given number.

Year 1 will revisit counting in 2s, 5s and 10s. They will begin to apply this knowledge to solve multiplication and division problems using apparatus for support. They will also look at finding fractions (halves and quarters) of a quantity.

### **Reception.**

Reception will be consolidating their knowledge of numbers to 10 and beyond by practising careful counting, matching numbers to quantities and identifying one more and one less than a given number. They will be looking at the composition of numbers and begin to apply this to the concept of number bonds. They will also be practising strategies for addition and subtraction using apparatus to support.

Reception will also be looking at counting groups of objects and using this skill to solve problems involving doubling, halving and sharing.

### **Science (Understanding the World).**

We be will looking at **Plants** including identifying a variety of common wild and garden plants including trees. We will be observing the structure of plants and learning to identify the main parts of plant. We will be planting our own seeds and looking at the conditions they need to grow successfully. We will be observing and recording the changes in plants over several weeks.

### **RE (Understanding the World).**

#### **Year 1 - What does it mean to belong to a faith community?**

We will be thinking about what the word belong means and why this is important to people of different faiths.

#### **Reception - Why is the word *God* so important to Christians?**

We will be looking at what the word *God* means to people of the Christian faith.

### **Art (Expressive Arts and Design).**

Our Art focus this term will be an Artist Study. We will be thinking about these questions: Who is this artist? What does this artist do?

We will explore the work of this artist and think about the work which they like/dislike and why? How does the art make them feel?

We will then use the work of the artist to inspire our own creativity.

Once we have created our work we will explain the link between our work and the artist we studied in simple terms.

### **PE (Physical Development) (Personal, Social and Emotional).**

#### **Year 1 - Multi skills.**

We will be focussing on ball control with an emphasis on introducing simple games, for example football and netball.

#### **Reception - Outdoor learning.**

The children will learn to appreciate the natural world, including working in our school garden. They will have the opportunity to develop team working skills through building dens and obstacle courses, learning to follow instructions and embrace new challenges.

Both Reception and Year 1 will also be completing a unit of work on **gymnastics** focussing on movement, strength, balance and coordination incorporating both floor and apparatus work.

### **Geography (Understanding of the World)**

In Geography our topic will be "Passport to the World" where we will explore different climates across the globe, look at food miles in the global supermarket and undertake a study of China and city of Shanghai.

### **ICT**

#### **Year 1**

This half term we will be looking at **programming** using the BeeBots and online Sprite packages and **algorithms** including exploring what an algorithm is and creating our own simple algorithm.

### **PSHE (Personal, Social and Emotional)**

Both Reception and Year 1 will be focussing on **Relationships** using the Jigsaw Scheme of Work.