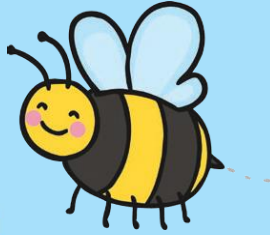


Fractions

Challenge Cards



twinkl

Fractions

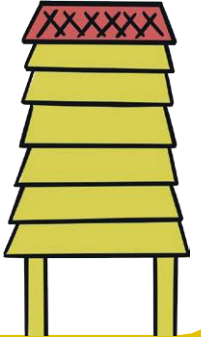
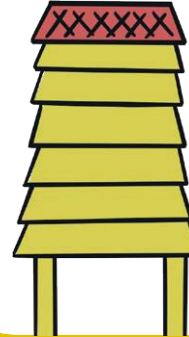


1. A beekeeper has 10 bees and two hives. He puts 5 bees in each hive. Circle the fraction of the bees that will be in one hive.

$$\frac{1}{4}$$

$$\frac{1}{2}$$

$$\frac{1}{3}$$



twinkl.com

Fractions



2. Aleena keeps 4 bees in a small hive. She needs $\frac{1}{2}$ of these bees to move to a new hive. How many bees will be in the new hive?

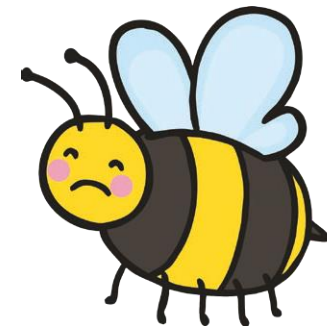


twinkl.com

Fractions



3. The beekeeper has found 12 injured bees. $\frac{1}{2}$ of these bees need to go to the bee vet. How many bees will go to the bee vet?



twinkl.com

Fractions



4. Selma's bees have made 20 pots of honey. She sells $\frac{1}{2}$ of them. How many did she sell?

10

5

20



twinkl.com

Fractions



5. Half of the bees are sucking nectar from the flower and half are buzzing around. Fill in the missing number to show how many bees there were altogether.

$$\frac{1}{2} \text{ of } \boxed{} = 4$$



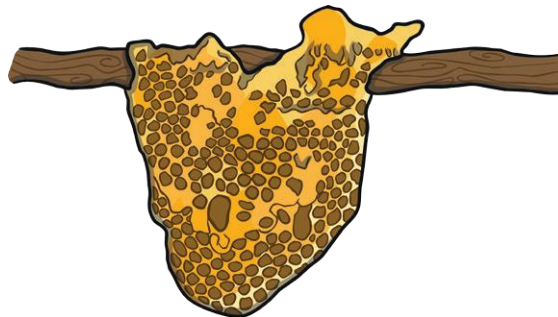
twinkl.com

Fractions



6. Half of the pieces of honeycomb had bees on them and half of them didn't. Fill in the missing number to show how many pieces of honeycomb there were altogether.

$$\frac{1}{2} \text{ of } \boxed{} = 7$$



twinkl.com

Fractions

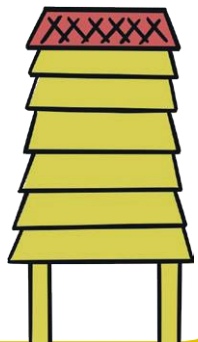


7. 50 out of the 100 hives that Balvinder looks after are empty. Circle the fraction of empty

$\frac{1}{4}$

$\frac{1}{2}$

$\frac{1}{3}$



twinkl.com

Fractions



8. 40 bees have come from Jia's hive. $\frac{1}{2}$ of these bees have yellow stripes on black bodies have black stripes on yellow bodies. How many bees have yellow stripes on black bodies?

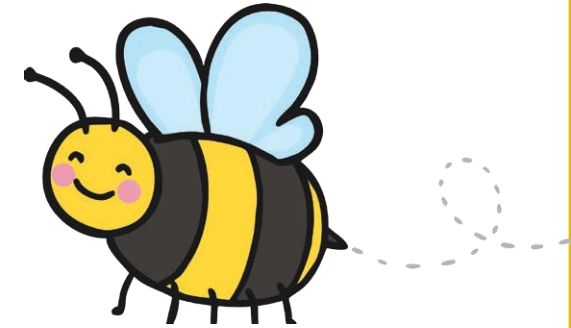


Fractions



9. The queen bee needed half of the bees working inside the hive and half of them outside gathering nectar. Fill in the missing number to show how many bees there were altogether.

$$\frac{1}{2} \text{ of } \boxed{} = 50$$



Fractions

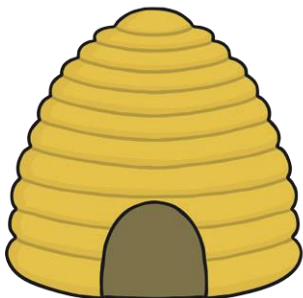


10. 40 out of the 80 bees in the hive were sleeping. Circle the fraction of sleeping bees.

$\frac{1}{3}$

$\frac{1}{4}$

$\frac{1}{2}$



Fractions Answers



1. $\frac{1}{2}$

2. 2

3. 6

4. 5

5. 8

6. 14

7. $\frac{1}{4}$

8. 20

9. 100

10. $\frac{1}{2}$