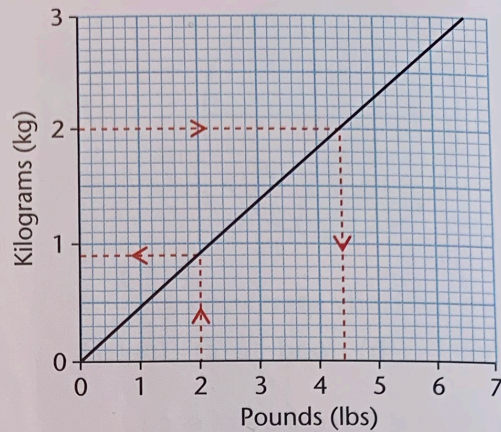


TARGET To interpret conversion graphs involving measures.

This graph converts pounds into kilograms and vice versa.

2 kilograms converts to 4.4 lb.

2 lb converts to 0.9 kg to the nearest 100 g.



A

This graph converts kilometres to miles.

1 Use the graph to convert to the nearest mile:

- | | |
|----------|----------|
| a) 16 km | e) 72 km |
| b) 40 km | f) 48 km |
| c) 32 km | g) 14 km |
| d) 56 km | h) 26 km |

2 Use the graph to convert to the nearest kilometre:

- | | |
|-------------|--------------|
| a) 50 miles | e) 5 miles |
| b) 15 miles | f) 34 miles |
| c) 40 miles | g) 19 miles |
| d) 21 miles | h) 46 miles. |

3 A marathon course is 42 km long. How long is the race to the nearest mile?

4 Two French villages are 9 miles apart. What is this distance as shown in km on a road sign?

